



Bartlams

71 Pendeford Avenue, Claregate, WV6 9EH

£229,950

Traditional-style semi-detached family home in a much-favoured neighbourhood on the north-western outskirts of the city with an excellent selection of local amenities close at hand. Impressive Hall with original tile Minton flooring and downstairs W.C. Bay-fronted Living Room with opening into a Dining Area Fitted Kitchen with access to a side garage. Three double Bedrooms. Tiled Shower Room. Gas-fired central heating. Double glazing. Garage incorporating. Lawn-enclosed rear garden with patio area and mature boarder.

- **THREE DOUBLE BEDROOMS.**
- **THROUGH LIVING/DINING ROOM.**
 - **FITTED KITCHEN.**
 - **SHOWER ROOM.**
 - **DOUBLE GLAZING.**
 - **CENTRAL HEATING.**
- **LARGE REAR GARDEN.**
- **OFF ROAD PARKING.**

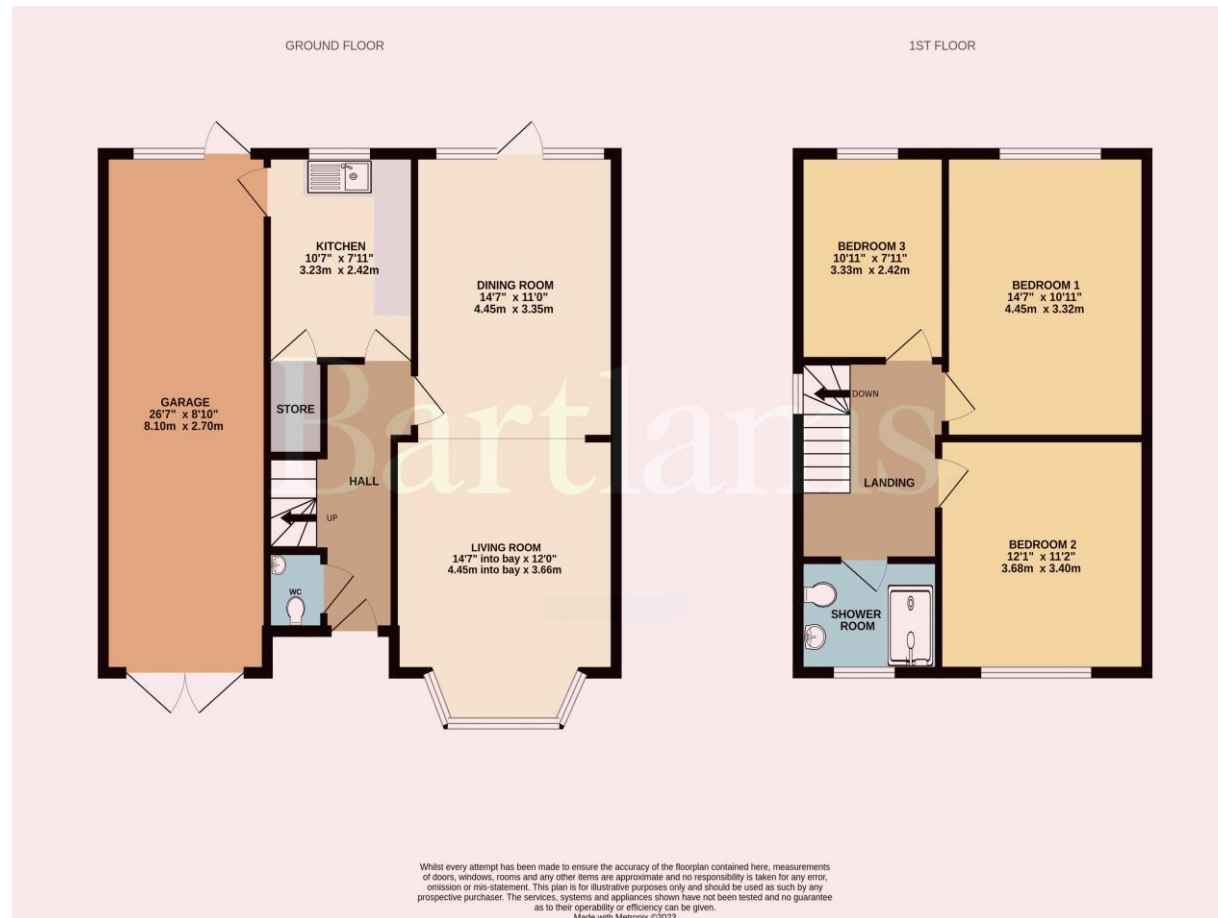


Freehold
COUNCIL TAX BAND - C
EPC RATING - D

NOTICE: These particulars, although believed to be correct, do not constitute any part of an offer or contract. All statements contained in these particulars as to this property are made without responsibility and are not to be relied upon as statements or representations of warranty whatsoever in relation to property. Any intending purchaser must satisfy themselves by inspection or otherwise as to the correctness each of the statements contained in these particulars. All measurements are approximate and for illustrative purposes only. Photographs are produced for general information and it must not be inferred that any item shown is included in the sale.

DISCLOSURE: As a professional Estate Agency our clients employ us to look after their best interests. This includes providing them with full details of offers made to purchase their property. To ensure our obligations to our clients are met we need to check the status of all potential purchasers. If you make an offer on this property we will ask a member of The Finance Family to contact you to verify your status. They are a leading firm of Independent Financial Advisers and Mortgage Brokers. Should they transact any business resulting from our introduction then we may receive a commission.

Bartlams



PLEASE SIGN BELOW TO AGREE THAT THE DETAILS ARE ACCURATE TO THE BEST OF YOUR KNOWLEDGE

SIGNED:

DATE:

24 High Street TETTENHALL Wolverhampton West Midlands WV6 8QT

01902 759888

tettenhallsales@bartlams.co.uk

www.bartlams.co.uk



